

3D GLOBE VIEW

80" passive 3D-Stereo Monitor



3D GlobeView

- UHD-resolution, 8 MP (3.840 x 2.160)
- Native 4K-Resolution @ 120Hz with 10bit
- Circular line-by-line polarization 3D technology
- Optional Head-Tracking and gesture control
- Innovative, height-adjustable mounting solution

IMMERSIVE 3D-STEREO IN 4K

for Professional Applications

The 3D GlobeView is an ultra-high resolution, large display panel with a resolution and picture quality in 3D-stereo not seen before in large-format LCD displays. Designed specifically for high resolution professional applications, the 3D GlobeView display offers the image quality, connectivity, industrial design and configuration options required for professional and mission-critical environments.

As a 3D-stereo display, it is ideal for stereoscopic, true-depth group visualization and team interaction, offering a unique combination of very large screen area and high pixel density. It is ideally suited to provide high-resolution visual information, for instance in mid-sized conference rooms. The display surface of the 3D GlobeView can be expanded horizontally by adding additional units to create a 3D Powerwall.

For applications such as oil & gas exploration, geospatial intelligence, command center collaboration, engineering design visualization and simulation, the 3D GlobeView delivers the ultimate visual 3D-stereo or VR-interactive display surface in this format.

Highlights

- 80" Ultra HD resolution (3,840 x 2,160) LCD display
- Supports native 4K at up to 120Hz with HDMI and DisplayPort connectivity
- 1,07 billion colors at full 10-bit color depth
- Advanced multi-source viewing
- Fan less, whisper quiet operation with built-in power redundancy, significantly reducing failure risk
- Low cost, reliable passive 3D-stereo, flicker-free
- Effortlessly move between 2D and 3D content with today's latest generation of graphic cards



4K

3D

60Hz

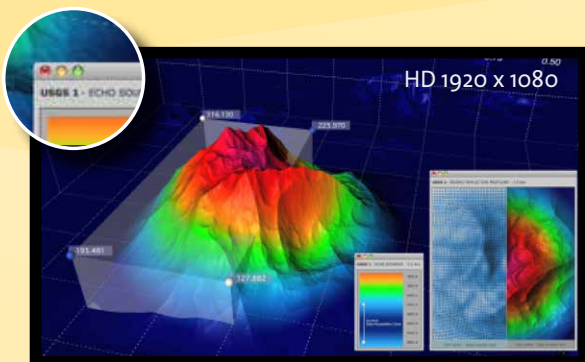
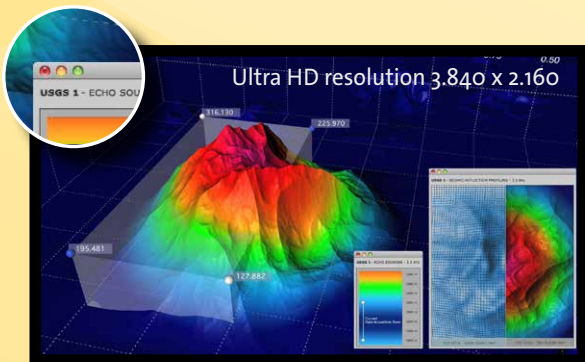


OPTIMIZED FOR HIGH RESOLUTION, PROFESSIONAL APPLICATIONS

Designed to meet the demanding requirements of professional high resolution visual collaboration - even in 3D-stereo

4K (UHD) Resolution in Perfection

The 3D GlobeView has four times the resolution and pixel density of a comparably-sized Full-HD display. Displaying visually rich content in UHD, it produces clarity and fine detail that appears sharp even at close viewing distances, even in 3D-stereo mode. A 3D GlobeView display provides the same resolution and similar screen area to that of a 2x2 narrow bezel LCD video wall without any panel separation in the display area. The 3D GlobeView incorporates advanced display technology to further enhance image quality. With features such as up 120Hz refresh rate, 10-bit color depth, local dimming for enhanced contrast and high brightness panel options, the monitor provides uncompromising image quality not possible with other display technologies, even in 3D-stereo mode!



The 3D GlobeView has four times the resolution and pixel density of a comparably-sized full HD display.

Built By Professionals, for Professionals

The 3D GlobeView is designed from the ground up for professional applications. The display incorporates the latest standards in digital video technology, i.e. 1x USB Type-C 1.4 port, 2x HDMI 2.0, 2x DisplayPort 1.4, 2x USB 2.0 – so that multiple 4K sources can be connected simultaneously, switched between and displayed in native resolution. The display has been optimized and tested with a range of the most popular professional graphics cards, controllers and content sources, in order to make solution deployment easier and more successful for applications, including:

- Geospatial software
- Oil and Gas Exploration and Production
- Process Control
- Computer Aided Design (CAD)
- Architecture
- Visualization and Simulation
- Medical Imaging
- Digital Post-Production
- Science – Academic Research and Commercial
- Financial Analysis
- Control Room
- Collaborative Conference Room / Team Room
- Digital Signage
- 3D-Training and Education

2D MONOSCOPIC OR 3D-STEREO

4K passive-stereo LCD display to move seamlessly between 2D and continuous high-quality 3D-stereo with passive glasses.

2D or 3D-stereo with one click

The 3D GlobeView can display 3D-stereo and conventional 2D content, maintaining the full capabilities of a multi-purpose, ultra-high-resolution display throughout. The display is compatible with all popular graphic cards and 3D-visualization software tools, provided by various applications, including:

- Data Visualization
- Molecular Modeling
- Engineering and Design
- 3D Production Review
- QC/QA Visualization for 3D Printing
- Oil and Gas Exploration
- Simulation and Training

Lightweight, passive 3D Glasses

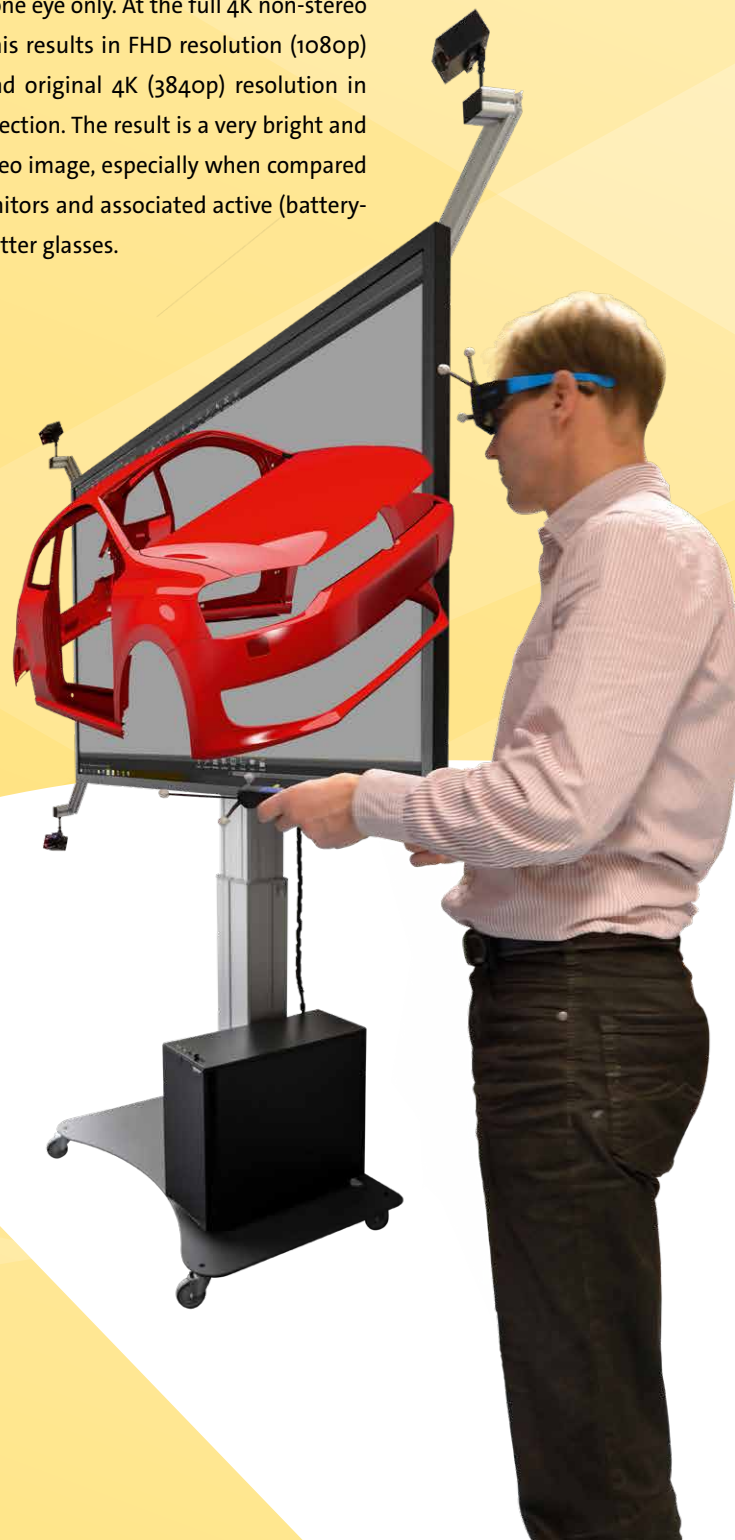
The 3D GlobeView uses passively-polarized glasses, which eliminate fatigue and eye strain when viewing 3D images, effectively facilitating continuous and comfortable use over many hours per session. Made of durable and robust Nylon material, they are lightweight, inexpensive and do not require any electronic or moving parts.

Highlights

- High resolution (3.840 x 2.160) in 3D-stereo Mode
- Move seamlessly between 2D and continuous stereo 3D-stereo passive glasses,
- Passive glasses deliver hours of comfortable use
- Much brighter 3D-stereo than active shutter panel technology

Stunning 3D Realism at 4K Resolution

The 3D GlobeView Stereo-Monitor uses film-type, patterned light-retarder technology to display two images at the same time on a single screen. Each line is circularly polarized in alternate directions to be visible to one eye only. At the full 4K non-stereo resolution, this results in FHD resolution (1080p) in vertical and original 4K (3840p) resolution in horizontal direction. The result is a very bright and sharp 3D-stereo image, especially when compared to 120Hz monitors and associated active (battery-powered) shutter glasses.



MOUNTING SOLUTION FOR THE 3D GLOBEVIEW MONITOR

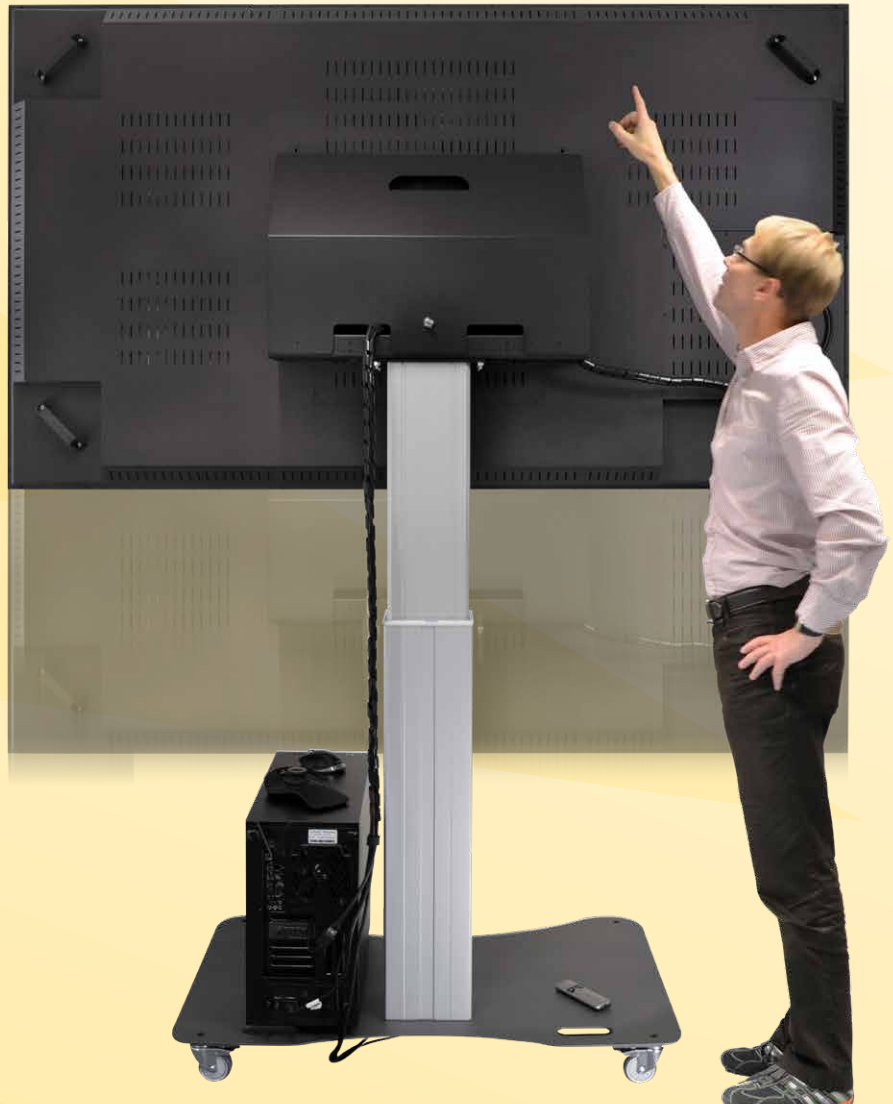
Adjustable, full electric Mounting System for VESA 800x400 for fixed and mobile installation.

Floor Mounting- Solution

Schneider Digital offers a special floor mounting for 84" 3D GlobeView Display with a VESA mount. What makes this product so unique is its adjustment flexibility and ease of installation with just three installation steps. This wheeled floor stand with electrical height adjustment (adjustable by remote control) has continuous and silent height adjustment and an integrated screen bracket suitable for most VESA display mounts. The included VESA bracket has another special feature as it can also be used as support for a desktop PC at the back.

Highlights

- Fully mobile thanks to castor wheels
- Electrical height adjustment by remote control
- Height adjustment from 120 to 190 cm (center of screen)
- Massive, solid aluminum and steel construction
- Space for Workstation or mini-PC
- Lockable back cover for remote controls or mini-PCs



TRACKING-SOLUTIONS FOR THE 3D GLOBEVIEW DISPLAY

Consisting of multiple, intelligent tracking cameras and one central controller with DTrack2 software. Fully scalable from two to 50 cameras and up to 45 targets simultaneously tracked with 6 degrees of freedom (DoF).

ARTTRACK SYSTEMS

Consisting of multiple, intelligent tracking cameras and one central controller with DTrack2 software. Fully scalable from two to 50 cameras and up to 45 targets simultaneously tracked with 6 degrees of freedom (DoF). The current ARTTRACK5 model is fully compatible with its predecessors ARTTRACK2 and ARTTRACK3, as well as with TRACKPACK cameras.

TRACKPACK SYSTEMS

Available in versions from two (2) up to eight (8) cameras, connected to one ART Controller with DTrack2 software. TRACKPACK systems are recommended for medium-sized tracking spaces and can be combined with ARTTRACK5 and ARTTRACK5/C cameras.

SMARTTRACK SYSTEMS

A fully integrated stereo camera system for smaller tracking volumes. It consists of two (2) cameras and one controller with DTrack2 software in a compact housing. Simultaneous tracking of up to 4 targets is possible.



ART ▶



Real-time tracking for large working areas 3D localization technology with a positioning Tracking Bar

The PST Iris series has the largest tracking range of the PST tracking cameras and is the ideal solution for tracking objects inside larger working areas. It is also an excellent choice for situations where the PST camera cannot be positioned close to the tracking target(s). It is ideal for use in measurement tasks, monitoring a working or larger simulation environments.

Highly accurate tracking within large working areas

The PST Iris HD is the premium version of the PST Iris optical tracker. It is equipped with two (2) HD cameras that cover an even wider measurement area with high-precision 6 DoF tracking. The resolution and the refresh rate of the PST Iris HD can be adjusted, enabling highly accurate tracking for almost any setup scenario.



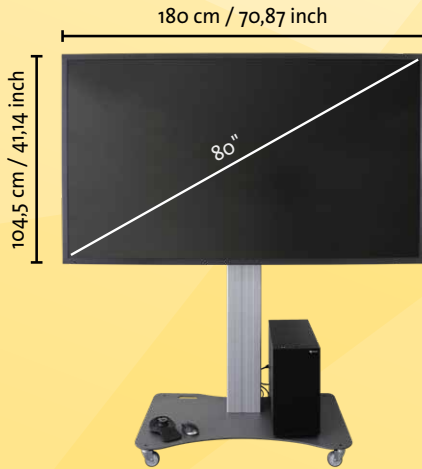
Optical tracking and its advantages

Optical tracking has proved to be a valid and often superior alternative to tracking systems, based on other technologies, such as magnetic, acoustic, gyroscopic and mechanical setups. There are various advantages to optical tracking, such as:

- Optical tracking is less susceptible to environmental interference (noise);
- Optical tracking does not suffer from drift problems;
- Optical tracking allows for many objects to be tracked simultaneously;
- Interaction devices can be lightweight and wireless.



3D GlobeView



3D GlobeView Monitor Specifications

Display	80" (2.032 mm) Screen Size 3.840 × 2.160 Resolution, RGB stripe arrangement 1.06 Billion Colors (10-bit) 400 cd/m2 Brightness (Center 1point, Typ.) Aspect Ratio: 16:09
	LED BackLit-Technology 8 ms Response Time G/G 178° / 178° Viewing Angle (H/V)
	Contrast Ratio: 1.200 : 1
Frequency	Vertical 120Hz, Horizontal 74 MHz
Pixel pitch	0,453 x 0.453 mm
Monitor type	Passive 3D stereo monitor
3D technology	Passive stereo, line-by-line circular polarization
3D-Characteristics	200 cd/m² Brightness with glasses 3.840 x 1.080 per eye resolution
3D-Formats	Horizontally line interlaced
Operating Systems	Windows / Linux / macOS-Compatibility
Certification	CE
Power supply	Internal power supply, 100-230V, 50-60Hz
Power Consumption	Power Consumption 167,1W typical; Annual PowerConsumption 300,2 kWh / year
Surface Treatment	Hard coating(2H) Anti-glare treatment of the front polarizer (Haze 1% Typ)
Weight	92 kg
Measurements	1.800 x 1.045 x 90 mm (W x H x D)
Interfaces	1x Typ C, 2x HDMI 2.0, 2x DisplayPort 1.4, 2x USB2
Audio	Integrated Speakers 2 x 2 W
Technical Notes	Remote control
Warranty	With optional carepack extended up to 5 Years; 12 months bring-in service
Ideal viewing distance	~ 150 - 450 cm
Visable display size	1.740 x 978 mm
VESA mount	600 x 400 mm



SCHNEIDER DIGITAL
Josef J. Schneider e.K.
Maxrainer Straße 10
D-83714 Miesbach

Tel.: +49 (8025) 9930-0
Fax: +49 (8025) 9930-299
www.schneider-digital.com
info@schneider-digital.com

Partner of:

